



# December



Sun

Mon

Tue

Wed

Thu

Fri

Sat

**WARM WINTER WEAR Collection**  
**Socks, mitts, toques & scarves**  
 November 29 - December 10  
 Let's help others this Advent!  
 How many items can we collect?



**1**  
 Christmas Plant  
 pick up after school  
 3:30pm



**2**

**3**  
 Wear your OLA gear  
 or blue and white



**4**

**5**



**6**

STEAM Day

**7**

**8**

**9**

Advent Mass  
9:00 am



**10**

**11**

**12**



**13**

3<sup>rd</sup> Advent  
celebration 1:15 pm  
Hosted by 6S

MITTEN MONDAY



**14**

CHRISTMAS  
SWEATER TUESDAY



**15**

WACKY WINTER HAT



WEDNESDAY

**16**

Turkey Dinner

TURKEY THURSDAY



**17**

No School for ELP

RED OR GREEN DAY



**18**

**19**



**20**

**21**

**22**

**23**

**24**

**25**

CHRISTMAS BREAK



**26**

**27**

**28**

**29**

**30**

**31**

Classes resume  
Tues Jan 4, 2022

CHRISTMAS BREAK



## DECEMBER 2021

### MESSAGE FROM MRS. CALDER

December already! I would like to express my gratitude to our entire school community, staff, students, and families for the amazing resilience you have shown as we continue to navigate an ever-changing landscape in schools and education.

I would like to congratulate you all in our transition to Spaces. It is never easy to adopt new ideas, processes, and structures. Our teachers and students are continually learning how to best assess learning and understanding and then showcase it for families. I trust that parent teacher interviews provided an opportunity for families to discuss student growth, along with the new format, with teachers.

With Christmas approaching, we continue to make adjustments and celebrate in the best ways we can. Classes are again working to create a digital Christmas concert. We look forward to showcasing the gifts and talents of everyone at OLA.

The School Council, along with donations from local groups and businesses, will be providing turkey dinner for grades 1-6 students on December 16. We look forward to sharing this meal with our class cohorts and are thankful to the school council for their continued support.

While I am hesitant to say it has become a tradition, we are certainly looking forward to celebrating our last day before the Christmas break with a game of virtual BINGO. Again, school council will be providing some of the prizes for that day.

As we prepare for the true reason for the season, the birth of Christ, we focus our hearts as we “wait” for Jesus’ birth.

#### **Prayer for Advent**

*Lord Jesus, in these four busy weeks of Advent,  
help us to pause to remember the depth of your love for us.  
Beyond anything we deserved or could have imagined,  
love led you to a stable in Bethlehem and all the way to Calvary.  
Open our hearts to welcome you anew so that we have  
something to share with a needy world each day.  
Grant us the joy of your friendship and bring us some strength,  
courage and determination to serve our brothers and sisters in your name.  
Amen*

- Creative Communications for the parish



## TOGETHER ON THE JOURNEY

In November, our OLA family continued to journey together, exploring the saints and focusing on the gifts of the spirit. Our Remembrance Day celebration gave us a wonderful opportunity to remember those who, like St Catherine, gave their lives in defence of their beliefs.

December is a particularly special month for Our Lady of the Assumption School as the district focus falls on our patron saint, Saint Mary. Of course, December and the season of Advent provide the perfect opportunity to explore the Mother of Jesus and her holiness and devotion.



Most of us are very familiar with Mary -- perhaps so much so that hearing her called "Saint Mary" is a bit jarring. But Mary is indeed a saint, the first and holiest saint of all. Her willingness to respond to God's call regardless of personal fears, costs, or worries serves as a model for all of us in trying and difficult times, reminding us that no matter how confusing things may seem, God has a plan for everyone.

It is a common misconception that Catholics worship Mary. In fact, we place no person above God, and Mary is precisely that: a person. However, she is a person chosen from among all women to be Jesus' mother, and so we love and honor her as God's most perfected creature. This month is a great time to reflect with your families on the special place Mary holds in our hearts, and how we can follow her example of obedience and holiness in our everyday lives!

### Prayer to St Mary

*Mother Mary, we celebrate how you were conceived without the stain of original sin, in anticipation of your Son Jesus Christ's conception by the power of the Holy Spirit. Please watch over and intercede for our school community. We acknowledge you as the model Christian, perfectly faithful to your son from the moment of his own conception to the end of his earthly life and beyond. We, who are sinners, need your encouragement. May we stay close to your Immaculate Heart and thus draw ever closer to the Most Sacred Heart of Jesus. We ask this in the name of Christ, your son. Amen.*

*Mother Mary, pray for us.*

## ARE YOU TRAVELLING AT CHRISTMAS?

If your family is travelling outside of Canada over the Christmas break, please be aware of the Federal Government Health Measures that state all unvaccinated children are not permitted to attend school for 14 days after the arrival date back into Canada, even if they remain asymptomatic.

### CHRISTMAS PLANT DELIVERY

Thank you to all the families that supported our Christmas Plant fundraiser. The plants are due to arrive sometime on Dec. 1. We do not have the exact time of delivery and will communicate via email and Facebook once a time is confirmed. When you arrive and we will bring the plants out to you. Please ensure you make arrangements to pick up your order before the weekend as we cannot be responsible for their care.

### WARM WINTER WEAR



This year we are collecting NEW socks, mitts and toques to be donated to those in need. We will be accepting donations until December 10. Thank you for your support.

### CHRISTMAS VIDEO

This year each class will be videotaping a short Christmas performance for our OLA community to view. Permission forms have been sent home and need to be returned by as soon as possible. If you choose not to sign the consent form, your child will not be in the recording. Further information will be forthcoming once the details have been finalized.

### LOST AND FOUND

Our blue lost and found bin is located at the bottom of the stairs near the east entrance to the school. If your child is missing any clothes, outerwear, shoes, or lunch kit, please have them check out the box. Please remember to label all your child's belongings with both their first and last names so that items can be returned if they are misplaced. Many students have the same boots, so labelling these items will cause less confusion. We also strongly urge that children take home all their winter outerwear for use over the Christmas break.





*May the spirit of Christmas bring you and your family  
hope, happiness and love.*

*MERRY CHRISTMAS*

*from Our Lady of the Assumption School Staff*



Family Centre's program registration for the January – March session will be open on December 6<sup>th</sup>. For more information check out the website [All Programs – Family Centre \(famcentre.ca\)](https://www.famcentre.ca)



## **Your Guiding Adventure Starts Here!**

At Girl Guides, we aim to empower every girl to be everything she wants to be by providing them a safe space to shine, take the lead and explore new challenges and interests. Registration for the 2021-2022

Guiding year is now open!

Register at [www.girlguides.ca/joinnow](https://www.girlguides.ca/joinnow)



# December

Together on the Journey



St. Mary

Schools: École St. Mary, St. Mary Taber  
Our Lady of the Assumption

*“And Mary said, “My soul magnifies the Lord, and my spirit rejoices in God my Savior, for he has looked with favor on the lowliness of his servant. Surely, from now on all generations will call me blessed; for the Mighty One has done great things for me, and holy is his name.”*

Luke 1:46-49

OLA



ST. MARY

Mary, the mother of Jesus, commonly referred to as Mary, Mother of God, Saint Mary, Virgin Mary and Blessed Virgin Mary, is one of the most admired figures in Scripture, and considered by many to be the greatest of all Christian saints. She was chosen and prepared by God to be the mother of His Son, because she freely chose to cooperate fully in the graces given to her and in the vocation she received. She was a willing servant who trusted God and obeyed His call. While her life held great honour, her calling also required great suffering. Though there was joy in motherhood, there was great pain in the privilege of being the mother of the Messiah. Despite these things, she responded to God with great obedience and submission to His plan. Her life never robbed Jesus of His glory, for her mission was to witness the glory of the Son of God.

## The Miraculous Medal

"The religious sense of the Christian people has always found expression in various forms of piety surrounding the Church's sacramental life, such as the veneration of relics, visits to sanctuaries, pilgrimages, processions, the stations of the cross, religious dances, the rosary, medals, etc." (CCC 1674). There are many devotions that Catholics have to Mary, from devotion to Our Lady of Guadalupe to Mary, Undoer of Knots. One particular sacramental devotion is the Miraculous Medal, which has held a special place in the heart of many Catholics since 1830, when the Blessed Mother appeared to St. Catherine Labouré and asked her to create it.

"O Mary, conceived without sin, pray for us who have recourse to thee."



The rays that shoot out from Mary's hands "symbolize the graces I shed upon those who ask for them."

Mary standing on the globe, with the head of a serpent beneath her feet.

The year 1830 on the Miraculous Medal is the year the Blessed Mother gave the design of the Miraculous Medal to St. Catherine Labouré .

12 stars represent the 12 Apostles.



The cross reminds us of Jesus' cross of redemption.

The "M" reminds us that Mary is both Mother and Mediatrix.

Two flaming hearts. The left heart, circled with thorns, represents Jesus. The right heart, pierced by a sword, symbolizes Mary.

There is no superstition, nothing of magic, connected with the Miraculous Medal. The Miraculous Medal is not a "good-luck charm". Rather, it is a great testimony to faith and the power of trusting prayer. Its greatest miracles are those of patience, forgiveness, repentance, and faith. God uses the Medal, not as a sacrament, but as an agent, an instrument, in bringing to pass certain marvelous results. "The weak things of this earth hath God chosen to confound the strong." (1 Corinthians 1:27)

*“Then Mary said,  
“Here am I,  
the servant of the Lord;  
let it be with me  
according to your word.”  
Then the angel departed from her.”*

- Luke 1:38

# December

Together on the Journey



St. Mary

Schools: École St. Mary, St. Mary Taber  
Our Lady of the Assumption

## Feast Days and Celebrations December 2021

- 8** Immaculate Conception of the Blessed Virgin Mary
- 12** Feast Day of Our Lady of Guadalupe
- 12** National Day of Prayer in Solidarity with Indigenous People
- 25** Christmas Day/The Nativity of the Lord
- 26** Feast of the Holy Family
- Jan. 1** The Solemnity of Mary, the Holy Mother of God

As you journey with St. Mary this month...

### WEEK ONE

What do you think it was like for Mary and Joseph to talk about this baby having been conceived miraculously? To receive the visit of the wise men, to fly by night into Egypt, to return to Nazareth? Imagine yourself in one of these scenes. What might God be teaching you through this scene?



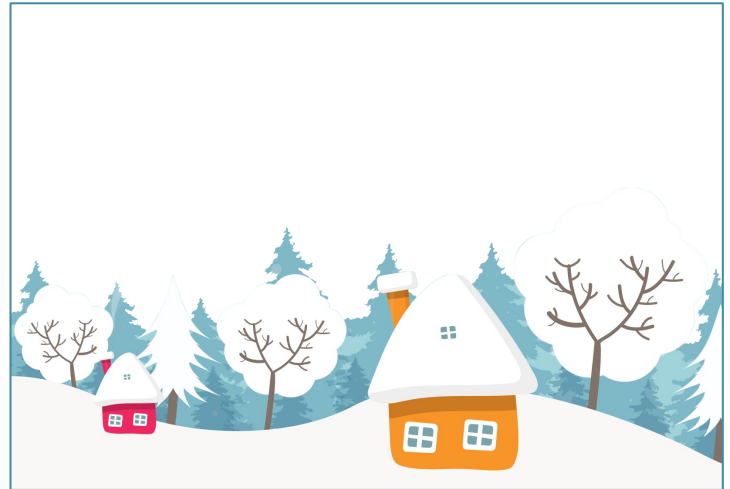
### WEEK TWO

We all have many memories of Christmas - memories of family, food, presents, and the rest. When you think of Christmas, what makes you think of Jesus? Spend a few moments today thanking God for that memory.



### WEEK THREE

Think about your mother today. How has her life blessed you? Where does she need your prayers? Offer a prayer to God today for your mother.



### WEEK FOUR

Who do you consider a spiritual parent? Who in the Church has handed on the faith to you? Who in the Church has taught you about the Bible? Which family members? Which priests or deacons or bishops? Remember their teaching and thank God for them today.



Sources: *Daily Lessons from the Saints* by Fr. Brice Higginbotham  
[6 Fascinating Facts about Mary, Mother of Jesus](#)  
[What Is The Miraculous Medal](#)  
[Association of the Miraculous Medal](#)

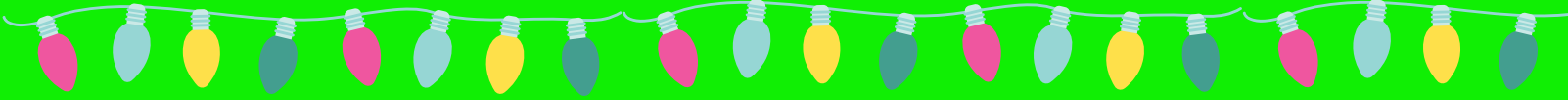


### Sunday Gospel Readings

- Dec. 5th/2nd Sunday of Advent  
Luke 3:1-6
- Dec. 12th/3rd Sunday of Advent  
Luke 3:10-18
- Dec. 19th/4th Sunday of Advent  
Luke 1:39-45
- Dec. 26th/Holy Family of Jesus, Mary and Joseph  
Luke 2:41-52



# OLA School Council News



*OLA School Council would like to wish everyone  
a Merry Christmas and a healthy and happy  
New Year!*



## Thank You :

Thank you to Prime Catering for providing the November Hot Lunch. Thank you to Harris Kenway for generously offering to pay for the hot lunch for the entire school!!



## Welcome:

Please join us in welcoming our new School Board Trustee Linda Ellefson. We look forward to working together this year!

## Upcoming Events:

On Thursday December 16th students and staff will enjoy a traditional Christmas turkey dinner from Prime Catering. Thank you to the Knights of Columbus #5726 for their generous donation towards this.



## Fundraisers:

- Ability Bottle Depot - North and South Locations - You can donate a portion or all of your recyclables to OLA.

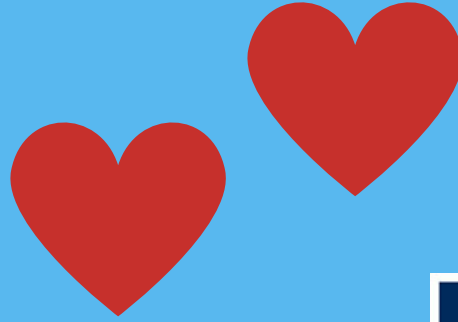
Got a suggestion - forward to [olaschoolcouncillethbridge@gmail.com](mailto:olaschoolcouncillethbridge@gmail.com)



# THANK YOU!

Thank you to the following donors who have generously given to OLA in support of:

- back to school hot lunch
- gym equipment
- classroom supplies
- hot lunches
- Christmas turkey dinner
- classroom activities
- prizes
- and more!

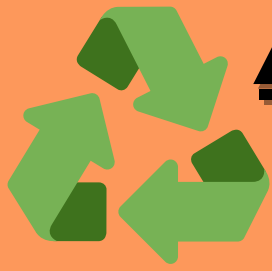


Blessed

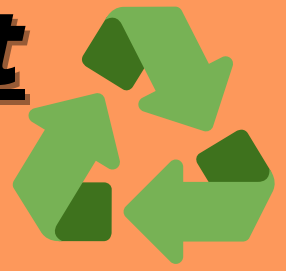


Grateful





# **Ability Bottle Depot** **Fundraiser**



You can donate a portion or all of your bottle recyclables to Our Lady of the Assumption school.

This will be an ongoing fundraiser at both the North and South locations. [www.abilityresource.ca](http://www.abilityresource.ca)  
South - 2915 32 St S (403) 317-4880  
North - 1610 29 Street N (403) 329-3911



Remember to mention you are donating to OLA at the beginning. They are unable to add a donation to OLA once the return has started. At the end of every month a check will be given to OLA with the donations gathered that month.

Funds raised will go towards virtual field trips, gym equipment and more!

